

## 4<sup>th</sup> ICOM-CC EXPERTS'

## MEETING ENAMEL ON

## METAL CONSERVATION

### THURSDAY JUNE 14th, 2012

- 9.00 Registration
- 9.30 Introductory statements

### History and technology

Moderator : Marco Verità

- 10.00 **Josefa Gallego-Lorenzo**  
*El frontal de esmaltes de Orense : un taller de Limoges en Galicia (The enamelled frontal of Orense: a Limoges workshop in Galicia)*
- 10.30 **Stefan Röhrs**  
**W. Pape, Th. Jülich, L. Lambacher**  
*A study of the tower reliquary of the Hessian State Museum (Darmstadt) - Champlévé enamels seen with different eyes*
- 11.00 **Angelo Agostino**  
**A. Aceto, G. Fenoglio, A. Cerutti Garlanda, T. Leonardi, S. Lomartire**  
*Non invasive analysis of manuscript covers: portable X-ray Fluorescence enlightening medieval jewellery masterpieces*
- 11.30 Coffee break
- 12.00 **Marco Ferretti**  
**C. Polese, C. Roldán Garcia, I. Sabatini**  
*The medieval silver cross of Rosciolo: an XRF approach to the non-destructive investigation of gilt and enamelled metals*
- 13.00 **Françoise Barbe, Isabelle Biron, Béatrice Beillard**  
*Discovering the Venitian enamelled crockery from the Renaissance*
- 13.30 Lunch

Moderator : Julia Day

- 15.00 **Camille Grand-Dewyse**  
*Integrating history into historical art research: the plaque of the Guises or the dream of reconciliation*

- 15.30 **Gregory Bailey**  
*A technical investigation of the enamels of Susanne de Court*
- 16.00 **Véronique Notin**  
*Painted enamel : from Limoges to Beijing*
- 16.30 **Fredric Schneider**  
*The history of protuberant enamelling in Japan*
- 17.00 Coffee break

### Deterioration

Moderator : Gerhard Eggert

- 17.30 **Andrea Fischer**  
**G. Eggert**  
*Whodunit: Glass corrosion or cleaning ? A survey of corroded 18<sup>th</sup>-century enamel boxes in the Württemberg State Museum*
- 18.00 **Elzbieta Greiner-Wronowa**  
**D. Thickett, B. Rajchel**  
*Study of enamel degradation on copper relief*
- 18.30 **Marco Verità**  
**A. Cagnini, S. Porcinai, M. Yanagishita**  
*The 14<sup>th</sup>-15<sup>th</sup> c. basse-taille enamels from San Giovanni's altar in Florence. Manufacturing techniques and weathering phenomena*
- 20.00 **Dinner at Las Carmelitas Restaurant**  
C/ del Doctor Dou 1  
(Dinner fee around 30 euros)

### FRIDAY JUNE 15th, 2012

### Conservation case studies

Moderator : Agnès Gall-Ortlík & Cátia Viegas-Wesolowska

- 9.30 **Montserrat Pugès**  
**M<sup>a</sup> J. Alcayde, D. Gimeno, J. Huertas, A. Molina**  
*The Saint Catherine's dragon enamel found in Barcelona*

- 10.00 **Chiara Maggioni**  
**L. Morigi, M. P. Riccardi, A. Zanni**  
*Medieval enamels of the Poldi Pezzoli Museum, Milan: collecting, conservation and new research perspectives*
- 10.30 **Birgit Schwahn**  
*Enamel insert restorations on two Limoges painted enamels of the J. Paul Getty Museum*
- 11.00 Coffee break
- 11.30 **Jos Houbraken**  
**R. Houbraken**  
*The reconstruction and conservation of an important 16<sup>th</sup> c. Limoges enamel tazza signed « ICDV »*
- 12.00 **Julia Day**  
*The Frick Collection's Limoges enamels – Display case renovation and treatment*
- 12.30 **María Isabel Herráez Martín**  
*Estudio y restauración del Retablo de la Pasión. Esmaltes de Daroca (Study and conservation of the Passion altarpiece. Enamels from Daroca)*
- 13.00 Lunch
- 14.00 **Group discussion**  
*Organisation, bibliography, web-based communication, research issues and cooperation, next meeting*
- 15.30 Closing remarks
- 17.00 **Group visit of the Museu Nacional d'Art de Catalunya (MNAC)**  
Enamels of the Roman and Gothic Dep. with the curator Jordi Camps  
And Free visit of the temporary exhibition: *Catalunya 1400*

### SATURDAY JUNE 16th, 2012

- **Morning visit of the Museu de l'esmalt contemporani in Salou** with a special guided tour by Andreu Vilasís, director, and Núria López-Ribalta, curator.

- **The ENAMEL group of the Conservation Committee of the ICOM**

<http://www.icom-cc.org/88/enamel/>

The aim of this group is to facilitate the exchange of information on the study and conservation of enamels on metal among glass and metal conservation experts.

Enamels are composite objects in which glass and metal are intimately connected and consequently lead to complex conservation issues. Experts who study and conserve enamelled metal objects are generally specialists in only one of the two materials and need complementary information to conserve and treat these precious and delicate objects.

The group, made of 115 professional members from around the world, meets this year in Barcelona. It is a tribute to the enamelling tradition of the city, which has a notable presence of this type of objects in collections. The enamel experts' meeting will facilitate professional exchanges between the Spanish collections' stakeholders and the international experts attending the meeting.

- **Enamel Masterclass**

Barcelona, 11-13 June 2012

An Enamel Masterclass is also organised with the masters enamellers Andreu Vilasís and Núria López-Ribalta at the renowned Llotja Advanced School of Art and Design (Escola Superior de Disseny i d'Arts Llotja). This masterclass will be an occasion to learn more about enamel technology, experiment with materials and exchange impressions, doubts and theories.

Escola Superior de Disseny i d'Arts Llotja  
Carrer Ciutat de Balaguer 17, 08022, Barcelona  
<http://www.llotja.cat>



- **SCIENTIFIC COMMITTEE**

*Agnès Gall-Ortlik*, Conservator in private practice, Barcelona, Spain

*Cátia Viegas-Wesolowska*, Conservator in private practice, Gdansk, Poland

*Julia Day*, Conservator, Frick Collection, New York City, NY, U.S.A.

- **VENUE**

Museu d'Història de Catalunya  
Pl. de Pau Vila, 3 (Palau de Mar)  
08003 Barcelona Spain  
T: +34 93 225 47 00  
[www.mhcat.cat](http://www.mhcat.cat)  
Metro L4 Barceloneta

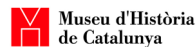
- **CONTACT**

**Agnès Gall-Ortlik**  
Corebarna S.L.  
c/ Mare de Déu dels desamparats, 5, 1<sup>r</sup> 5<sup>a</sup>  
08012 Barcelona Spain  
T: +34 620 233 951 - [info@corebarna.com](mailto:info@corebarna.com)  
[www.corebarna.com](http://www.corebarna.com)

- **SPONSORED BY**



- **IN COLLABORATION WITH**



**MNAC**  
Museu Nacional d'Art de Catalunya

Cover photograph:  
«Untitled», 1965, Carles Madirolas (Barcelona, 1934-2007)  
Enamelled steel plates on façade, Zurich building  
Av. Diagonal 431 bis, Barcelona

## 4<sup>th</sup> ICOM-CC EXPERTS' MEETING ON ENAMEL ON METAL CONSERVATION

14<sup>th</sup> - 15<sup>th</sup> June 2012  
Museu d'Història de Catalunya - Barcelona

### PROGRAMME

Organised by Agnès Gall-Ortlik

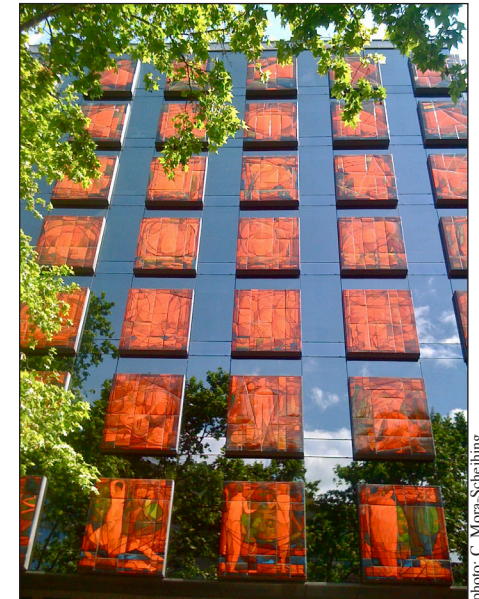


photo: C. Mora-Schelling

